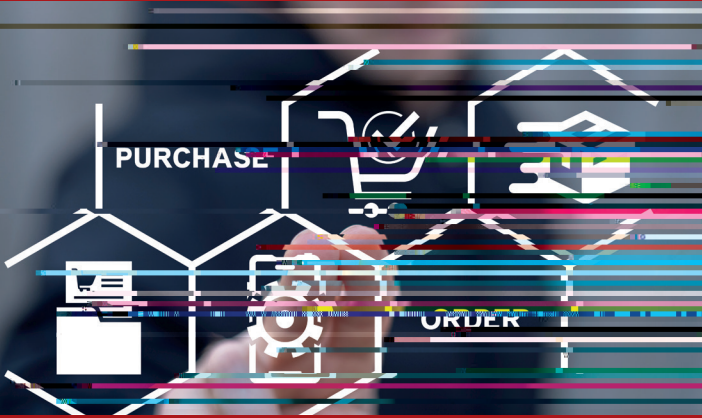




A member of **TOPWERK**



Customer-specific spare parts catalogue based on 3D models of your HESS concrete block machine

Detailed **documentation** of the HESS concrete block machine, including operating instructions, manuals and supplier documentation

Efficient search and ordering functions: enables **direct spare parts enquiries** to the HESS After Sales Service

Add-on Parts uses learning AI image technology to identify spare parts

HESS Maintenance provides the optimal stocking of spare parts and tools for plant maintenance

BE PART OF OUR EVOLUTION ...



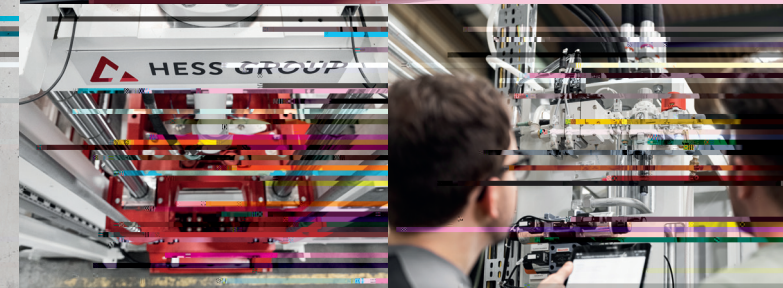
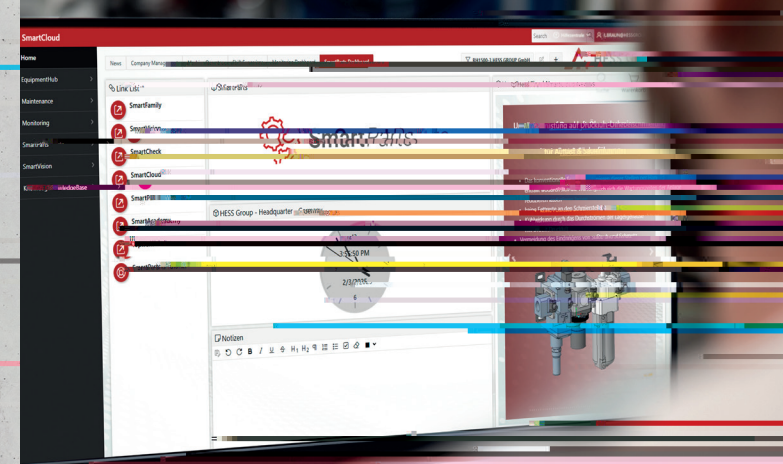
HESS Group GmbH

Freier-Grund-Strasse 123
57299 Burbach-Wahlbach
Germany

Phone: +49 2736 4976 690
E-mail: service@hessgroup.com
www.hessgroup.com



SmartParts DIGITAL SPARE PARTS CATALOGUE



SPARE PARTS CATALOGUE

- ▶ offers 3D models of the HESS system that can be virtually rotated, faded in and out and displayed semi-transparently. This helps to identify spare parts precisely and increases understanding of the machine.
- ▶ Efficient search functions in the parts catalogue, documentation and wiring diagrams by component name, part number or equipment ID as well as filtering by maintenance-, wear- or critical parts
- ▶ Complete overview of documentation of the plant, including HESS and supplier documents
- ▶ Support with spare parts identification: The Smart add-on Parts uses learning AI image technology for efficient identification and direct enquiry of spare parts.
- ▶ Optimised availability and storage: the HESS MaintenancePoint optimises the storage and availability of spare parts and tools. Labeled storage locations enable convenient reordering via

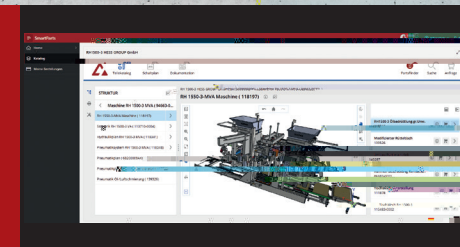
- Customer-specific spare parts catalogue with 3D models
- Documentation incl. operating instructions and manuals in PDF format
- Optional add-on: Learning AI image technology software Parts
- Optional support for spare parts management by HESS Maintenance

Have we sparked your interest?

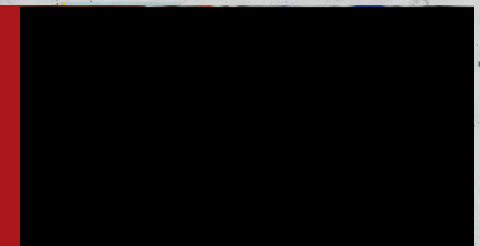
Request further information via smartfamily@hessgroup.com or simply scan the QR code



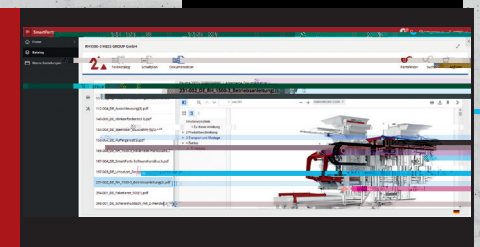
SmartParts



Smart
Customer-specific spare parts catalogue with 3D model



Parts
Support for spare parts identification using learning AI image software Parts (optional Smart add-on)



Documentation
Central storage of documentation in Smart



Maintenance
Optimized availability and storage of spare parts and tools